

A walk in the *Cameron Highlands*



Malaysia's Most
Extensive
Hill Stations



Covers 712km²
(about the size
of Singapore)



The Highest Point in
Malaysia is
Accessible by road



1135m to 1829m
Above Sea Level



Day -
above 25°C



Night -
below 15°C



THE JOURNEY



Chaley

Faroni Gore

W studio

Queenies Co. Ltd.

Xua's Studio

21:01
17°C

ARMANI CAMERON
BOULEVARD



PROJECT INFO

Type
Boulevard

Location
Habu , 39000, Pahang

Total Unit
27 Units

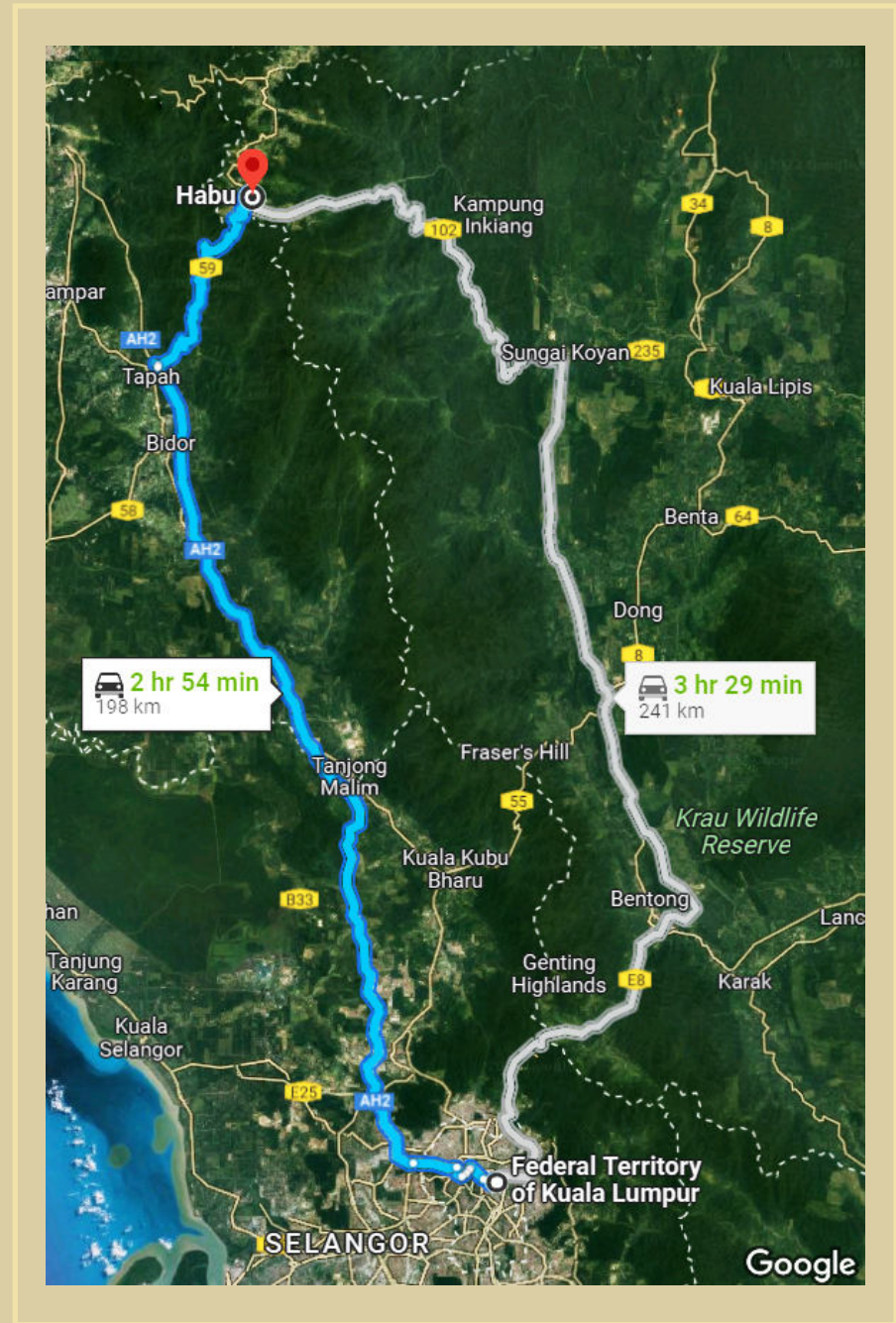
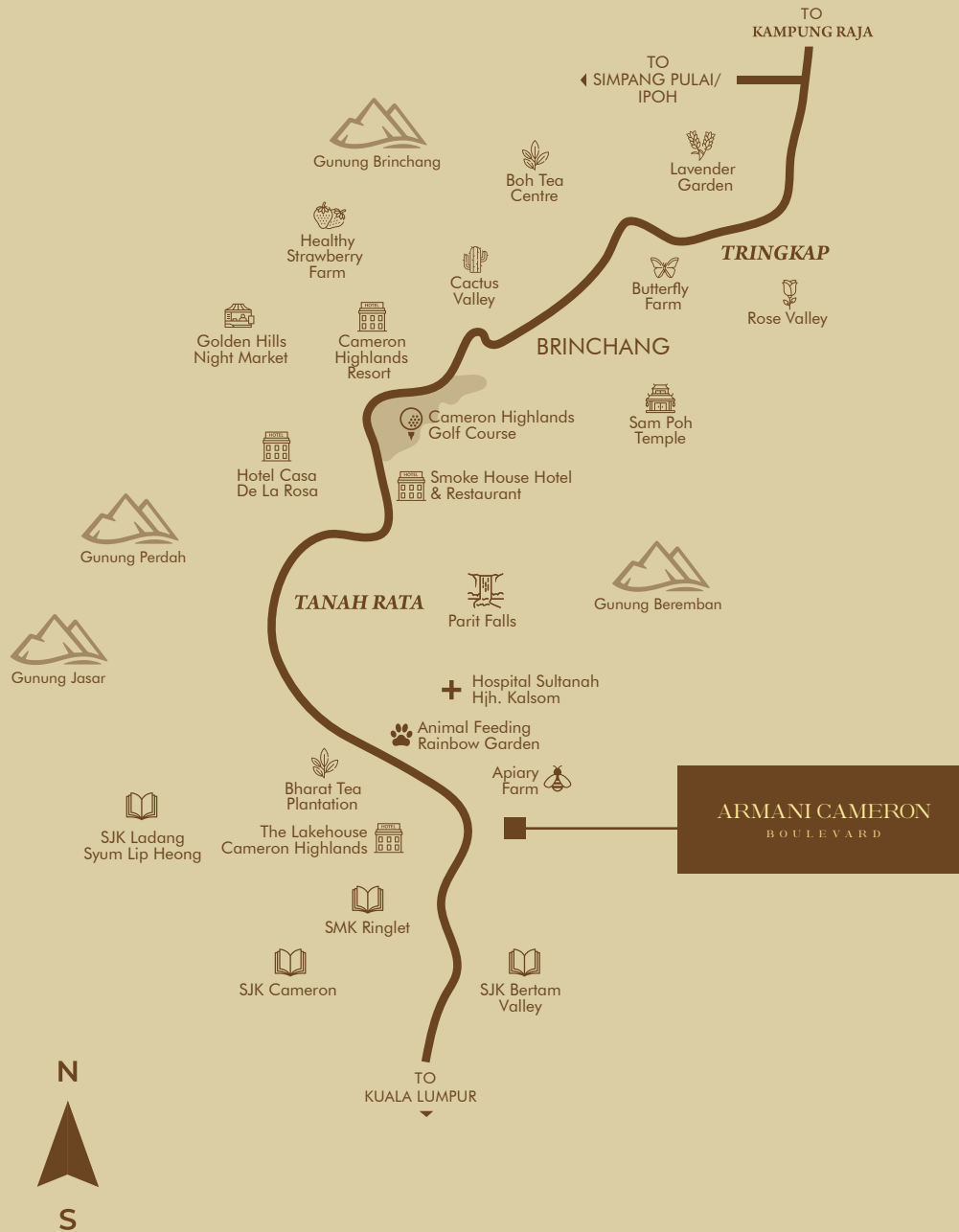
Land Size
0.862 arces

Lot Size
21' x 65' (25 Units)
23' x 65' (1 Unit)
30' x 65' (1 Unit)

Coordinates
4°25'57.4"N 101°23'32.7"E



LOCATION MAP





ATTRACTION

Highlands Apiary Farm	- 2 km
Cameron Bharat Plantation	- 9.9 km
Animal Feeding Rainbow Garden	- 11 km
Taman Eko Rimba	- 11 km
Smoke House Hotel & Restaurant	- 12.6 km
Sultan Ahmad Shah Golf Club	- 13 km
Golden Hill Night Market	- 13.5 km



EDUCATION

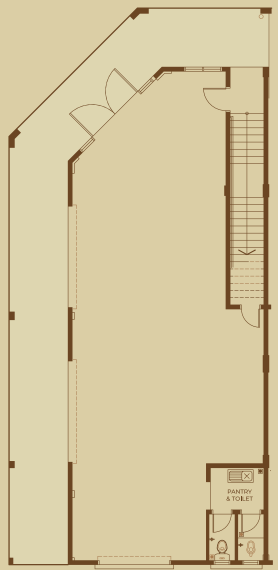
SMK Ringlet	- 1.6 km
SJK Cameron	- 3.7 km
SJK Bertam Valley	- 5.0 km



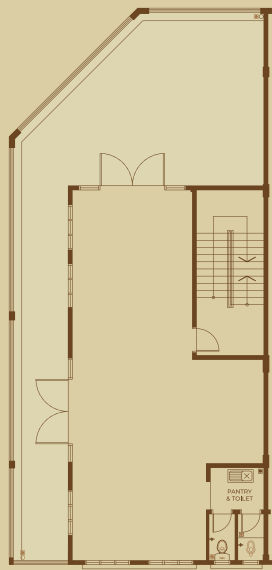
HEALTHCARE

Hospital Sultanah Hjh. Kalsom	- 11.5 km
-------------------------------	-----------

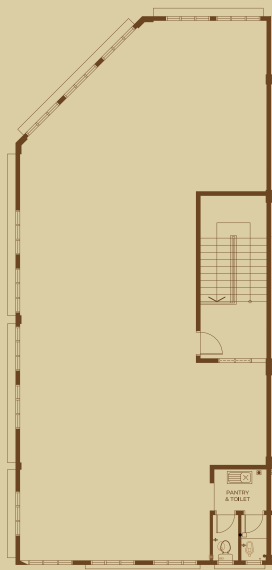




Ground Floor



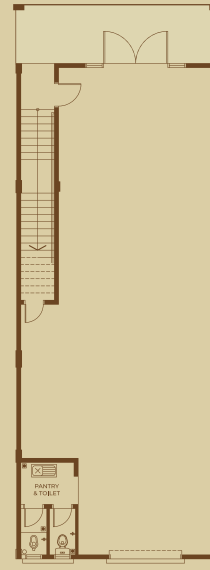
First Floor



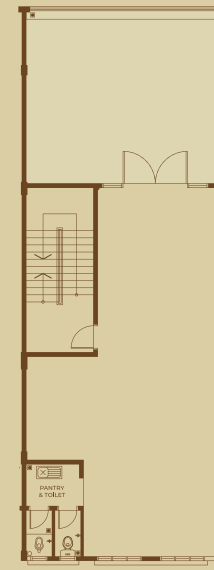
Second Floor

Type **A**

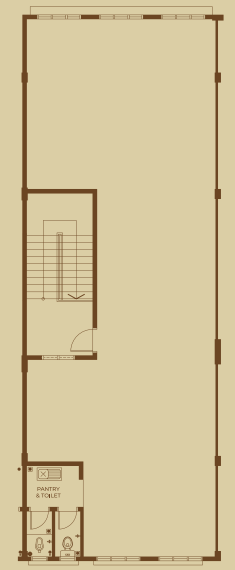
5427 ft



Ground Floor



First Floor

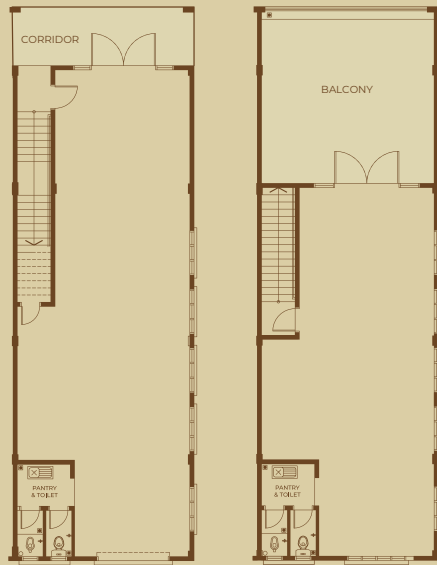


Second Floor

Type **B**

4451 ft



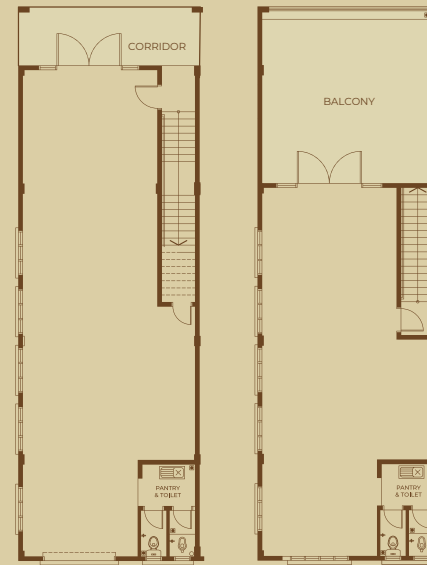


Ground Floor

First Floor

Type **C1**

2677 ft



Ground Floor

First Floor

Type **C1**_(M)

2677 ft



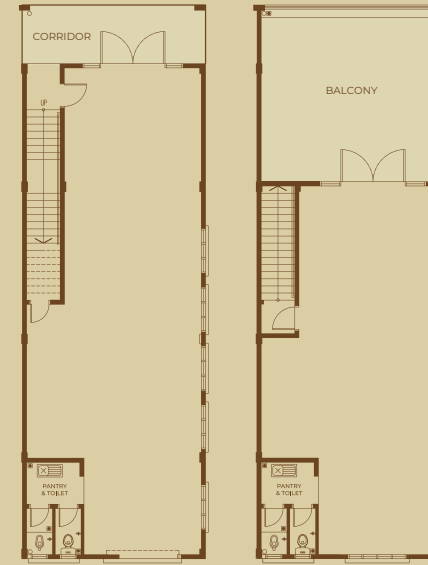


Ground Floor

First Floor

Type C

2709 ft



Ground Floor

First Floor

Type D

2703 ft

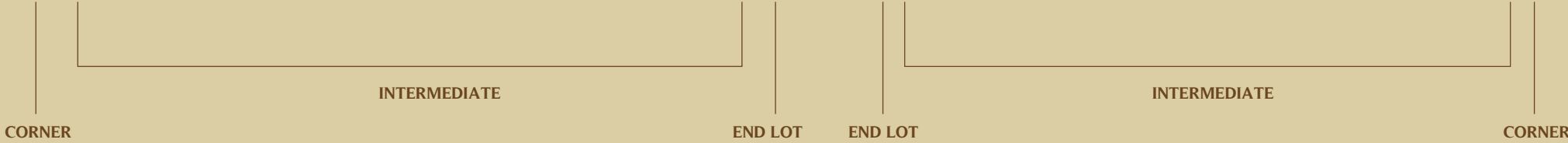


FLOOR PLAN



1	2	3	4	5	6	7	8	9	10	11	12	13	14
TYPE A 5427 ft	TYPE B 4451 ft	TYPE C 2709 ft	TYPE C 2709 ft	TYPE C 2709 ft	TYPE C 2709 ft	TYPE C 2709 ft	TYPE C 2709 ft	TYPE C 2709 ft	TYPE C 2709 ft	TYPE C 2709 ft	TYPE C 2709 ft	TYPE C 2709 ft	TYPE C1 2677 ft
3 storey	3 storey	2 storey	2 storey	2 storey	2 storey	2 storey	2 storey	2 storey	2 storey	2 storey	2 storey	2 storey	2 storey

15	16	17	18	19	20	21	22	23	24	25	26	27
TYPE C1 (M) 2677 ft	TYPE C 2709 ft	TYPE C 2709 ft	TYPE C 2709 ft	TYPE C 2709 ft	TYPE C 2709 ft	TYPE C 2709 ft	TYPE C 2709 ft	TYPE C 2709 ft	TYPE C 2709 ft	TYPE C 2709 ft	TYPE C 2709 ft	TYPE D 2703 ft
2 storey	2 storey	2 storey	2 storey	2 storey	2 storey	2 storey	2 storey	2 storey	2 storey	2 storey	2 storey	1 storey





ARMANI
GROUP

TAFI Development Sdn Bhd
No. 27, Jalan Juruanalisis U1/35, Hicom Glenmarie Industrial Park,
40150 Shah Alam, Selangor.

Tel: +603 5569 8229
Fax: +603 5569 3220

All pictures shown are artist's impressions/renderings for illustration purpose only. All visual renditions of interiors and lifestyle presentation are more of artist's impressions and shall not be taken as the identical representation of the actual state thereof. Nothing contained in this visualization shall constitute or be construed to constitute an offer, a contract, part of the Sale and Purchase Agreement, a representation and/or warranty on the part of the developer, unless expressly and specifically incorporated in the Sale and Purchase Agreement. Prospective purchasers are advised to read and scrutinize the Sale and Purchase Agreement together with its enclosures or to engage relevant independent professionals for advice prior to signing of the Sales and Purchase Agreement. The developer and/or other related companies and parties shall neither be held responsible for any error or inaccuracy nor be liable for any losses, damages, costs, expenses, or liabilities that may be incurred, suffered or sustained resulting from any reliance on this visualization or any part thereof.